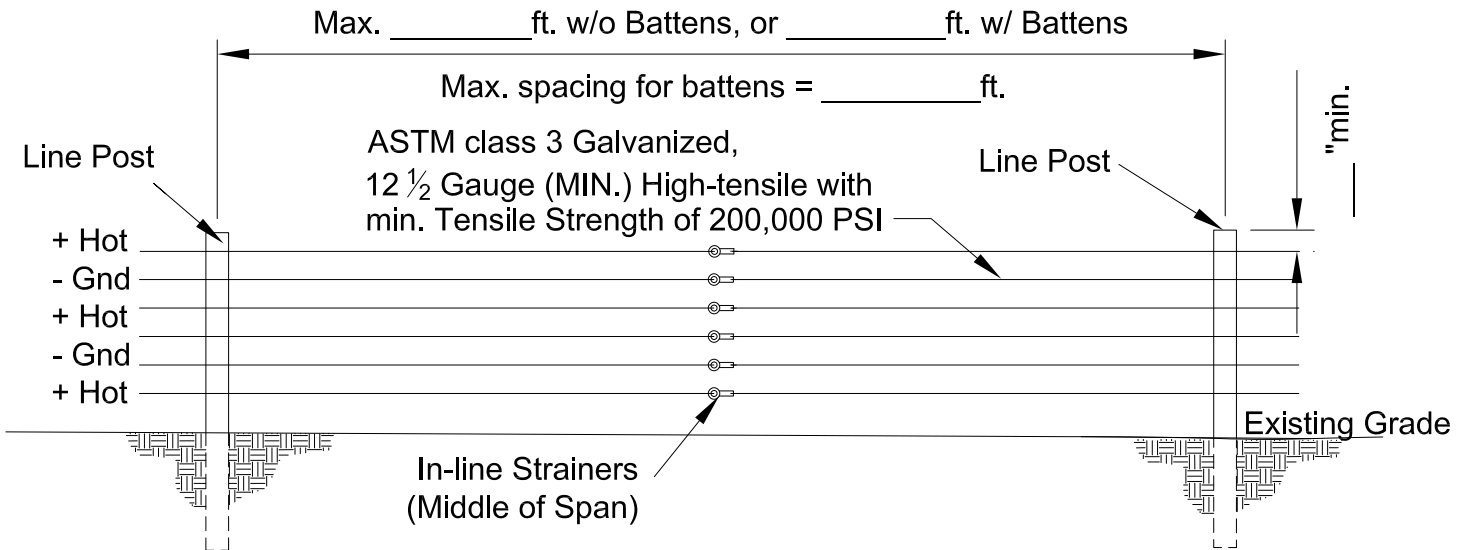
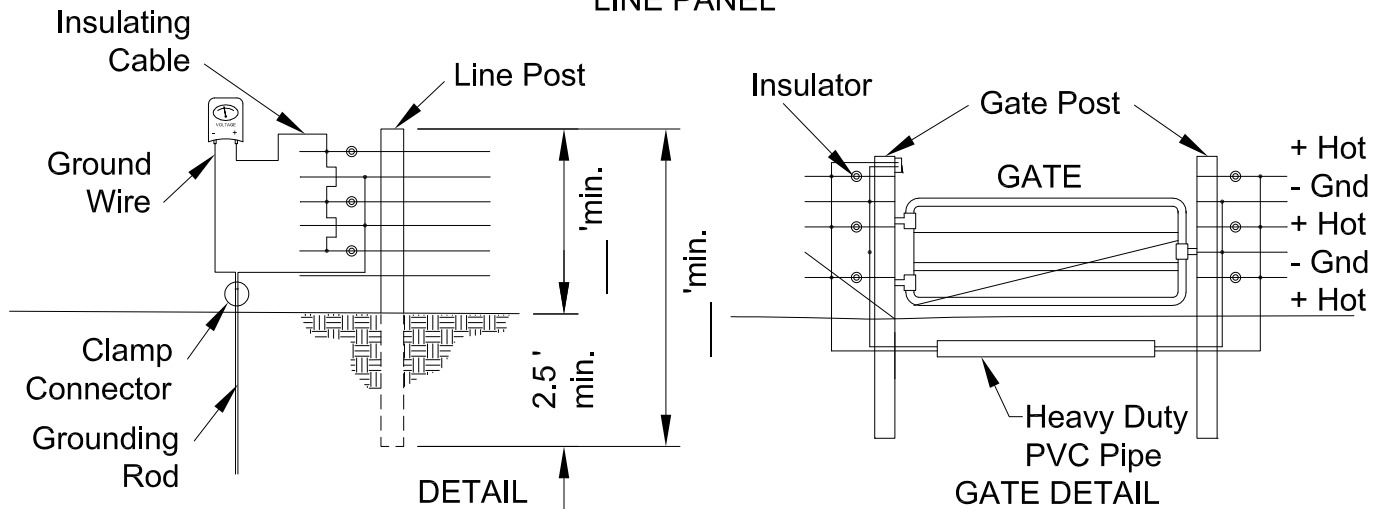


HIGH TENSILE SMOOTH WIRE ELECTRIC FENCE



LINE PANEL



Follow all manufacture's instructions when installing the fence charger (energizer) and grounding the fence.

Number of wires needed: _____ spacing at _____ inches above the ground.

Line Post (wooden): min. 4 in. diam. or 4 in. square

Line Post (steel): studded or punched T, U, or Y shaped, with anchor plates.
min. weight 1.25 lbs./ft. (excluding anchor plate).

SPECIES AND TREATMENT FOR ALL WOOD: Use untreated durable posts of species such as red cedar, black locust, or white oak with bark removed, or non-durable wood that is preservative pressure treated (AWPA UC4A, Ground Contact, General Use). Do not use red pine.

SPECIAL INSTRUCTIONS:

Drawing not to scale. Standardized drawing must be adapted to the specific site.